

**Office of Institutional Data, Analytics and
Reporting**

Post-Baccalaureate

Enrollment and Graduation Pattern

2024-25

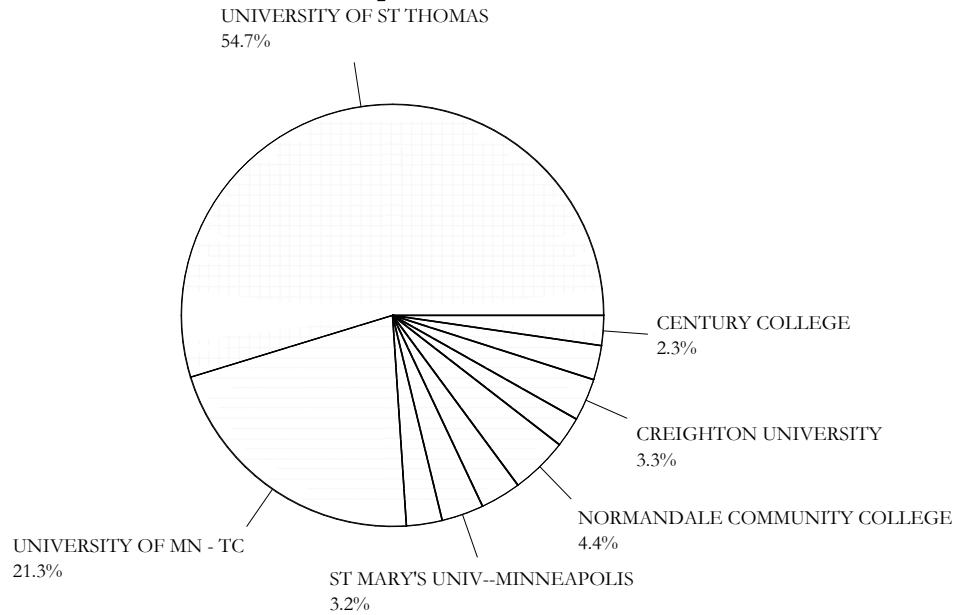
Enrollment/Graduation Pattern of Students Graduating From UST

Please Make your Selection: --> Undergraduate

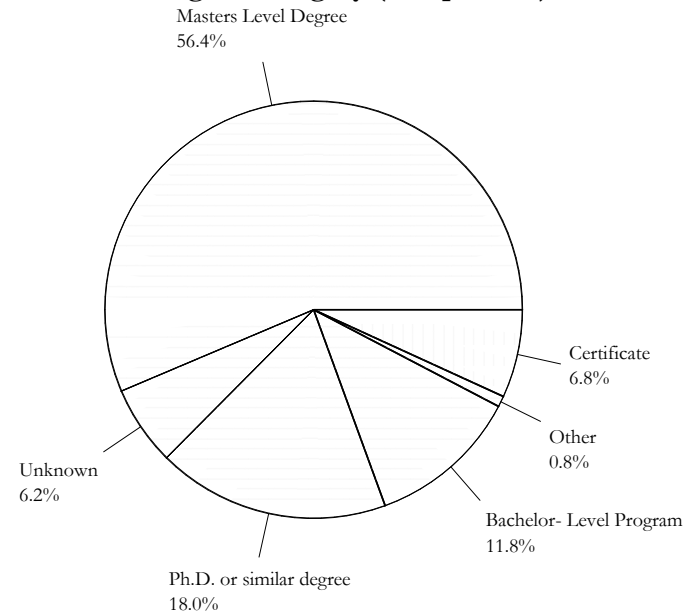
Annual Trend

	2010	2011	2012	2013	2014	2015	2016	2017	2018	2019	2020	2021	2022	2023	2024	2025
Graduated from UST	1,311	1,335	1,261	1,359	1,447	1,359	1,424	1,368	1,392	1,456	1,455	1,475	1,584	1,420	1,325	1,010
Enrolled after graduating from UST	559	562	530	498	549	497	482	450	488	517	503	492	448	368	304	192
Graduated from another program	462	462	444	389	436	388	359	342	377	355	333	310	190	152	56	
% of Students Enrolled	43%	42%	42%	37%	38%	37%	34%	33%	35%	36%	35%	33%	28%	26%	23%	19%
% of Students who Graduated from another Program	35%	35%	35%	29%	30%	29%	25%	25%	27%	24%	23%	21%	12%	11%	4%	0%

Top Ten Universities



Degree Category (as a percent)



Strategic Priority E1a: St. Thomas undergraduate students are highly competitive for admission to the best graduate and professional programs.

Enrollment Pattern of Students Graduating From UST

Please Make your Selection: --> Undergraduate

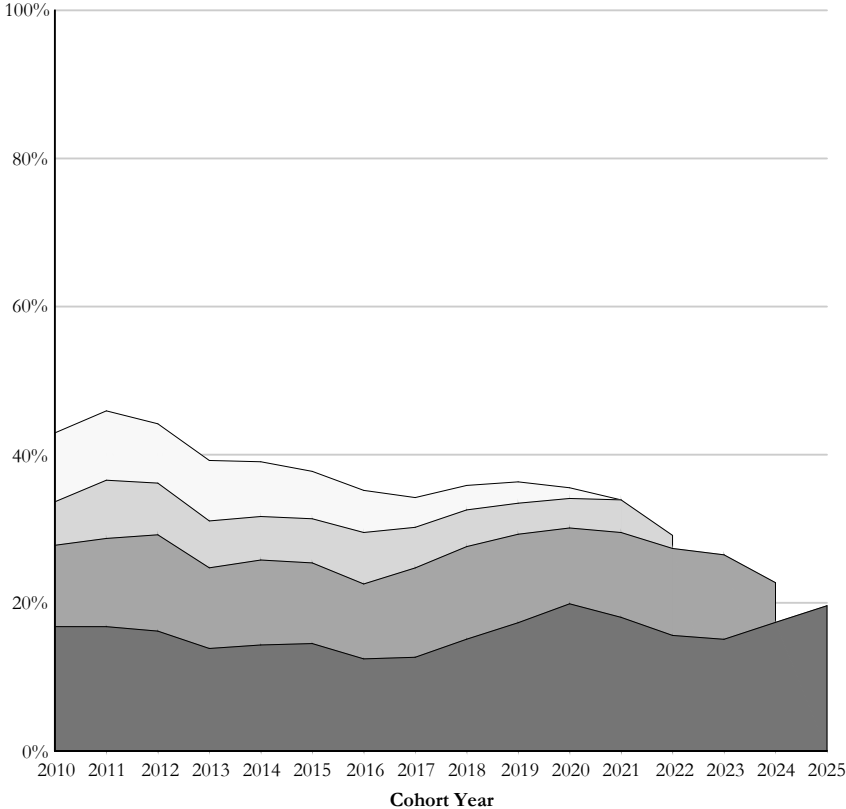
Top Ten Colleges

	2010	2011	2012	2013	2014	2015	2016	2017	2018	2019	2020	2021	2022	2023	2024	2025
UNIVERSITY OF ST THOMAS	161	157	154	134	144	133	109	125	125	158	169	166	134	139	127	86
UNIVERSITY OF MINNESOTA-TWIN CITIES	70	69	72	48	73	66	51	55	60	50	41	64	58	34	33	21
NORMANDALE COMMUNITY COLLEGE	13	16	21	10	10	13	15	16	10	9	3	7	14	8	8	6
HAMLIN UNIVERSITY	15	12	7	13	9	6	5	4	2	3	4	5	3	2	1	2
MITCHELL HAMLIN SCHOOL OF LAW	2		4	5	3	3	13	10	8	11	10	8	6	4	5	2
WILLIAM MITCHELL COLLEGE OF LAW	12	10	7	11	8											
CREIGHTON UNIVERSITY	4	7	4	5	12	6	6	13	14	10	9	15	19	10	9	
ST. MARYS UNIVERSITY	14	13	15	9	14	16	12	12	10	4	7	5	2			
SAINT PAUL COLLEGE	5	3	6	7	11	12	10	10	14	18	8	8	3	4	2	6
CONCORDIA UNIVERSITY	8	8	10	5	6	6	8	7	15	10	12	10	2	6	8	2
CENTURY COLLEGE	7	5	5	3	10	7	8	8	2	6	4	4	5	9	4	6
Other	246	267	222	251	246	225	241	189	228	241	238	201	204	154	103	63

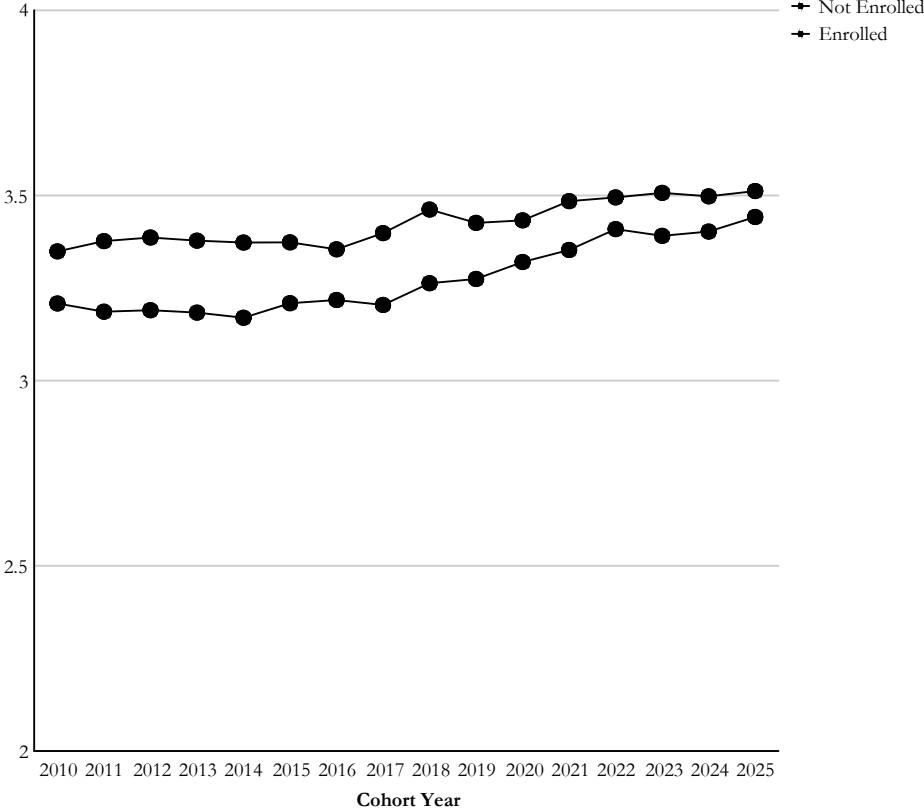
Enrollment Pattern of Students Graduating From UST

Please Make your Selection: --> Undergraduate

Enrollment within years (as a percent)



Average GPA



Enrollment/Graduation Pattern of Students Graduating From UST

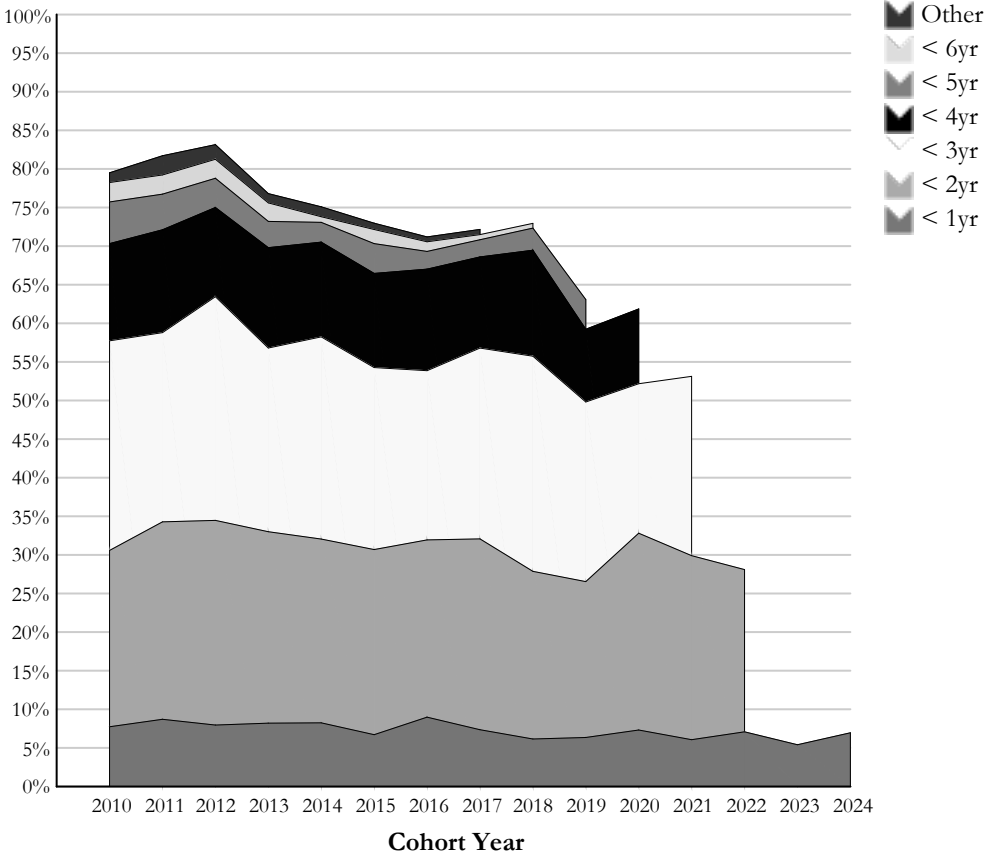
Please Make your Selection: --> Undergraduate

	Degree Category														
	2010	2011	2012	2013	2014	2015	2016	2017	2018	2019	2020	2021	2022	2023	2024
Bachelor- Level Program	31	25	30	21	29	19	21	28	14	56	54	54	30	85	37
Certificate	28	27	26	26	33	30	26	35	24	18	22	24	21	8	3
Masters Level Degree	301	304	282	230	259	235	212	199	224	172	178	161	98	57	12
Other	2	5		3	3	4		5	3	6	5	2	2		2
Ph.D. or similar degree	70	77	91	89	88	83	82	60	98	81	64	52	28		
Unknown	52	33	29	26	27	24	22	21	22	22	15	18	12	2	2

Enrollment/Graduation Pattern of Students Graduating From UST

Please Make your Selection: --> Undergraduate

Graduation Rate



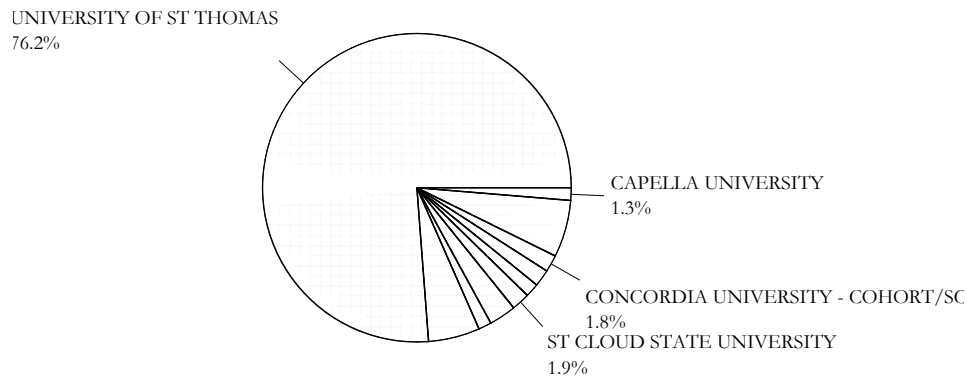
Enrollment/Graduation Pattern of Students Graduating From UST

Please Make your Selection: --> Graduate

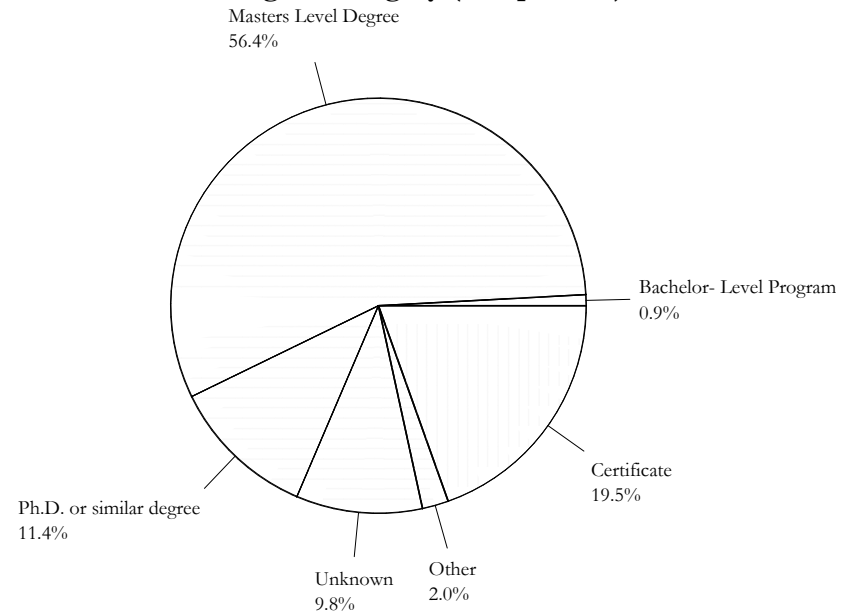
Annual Trend

	2010	2011	2012	2013	2014	2015	2016	2017	2018	2019	2020	2021	2022	2023	2024	2025
Graduated from UST	1,138	1,082	1,096	981	863	1,054	1,060	1,105	953	963	856	869	824	704	770	399
Enrolled after graduating from UST	306	277	253	244	173	229	241	265	243	205	191	179	170	120	108	31
Graduated from another program	150	135	142	137	84	126	120	129	147	111	110	87	77	68	62	
% of Students Enrolled	27%	26%	23%	25%	20%	22%	23%	24%	25%	21%	22%	21%	21%	17%	14%	8%
% of Students who Graduated from another Program	13%	12%	13%	14%	10%	12%	11%	12%	15%	12%	13%	10%	9%	10%	8%	0%

Top Ten Universities



Degree Category (as a percent)



Strategic Priority E1a: St. Thomas undergraduate students are highly competitive for admission to the best graduate and professional programs.

Enrollment Pattern of Students Graduating From UST

Please Make your Selection: --> Graduate

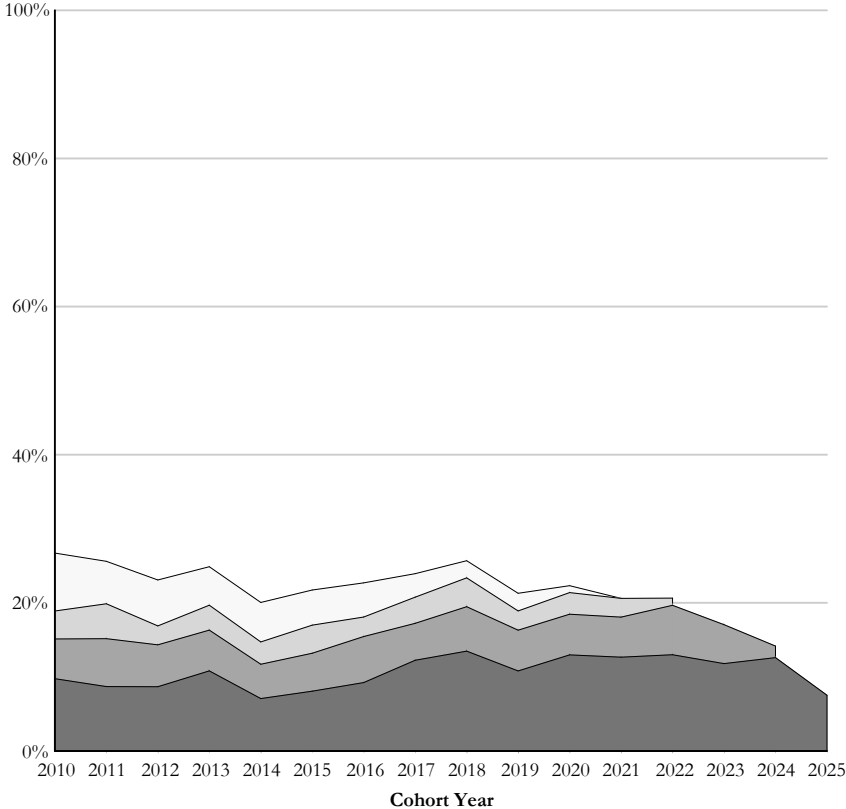
Top Ten Colleges

	2010	2011	2012	2013	2014	2015	2016	2017	2018	2019	2020	2021	2022	2023	2024	2025
UNIVERSITY OF ST THOMAS	133	132	139	122	78	98	112	145	150	124	126	124	116	87	88	23
UNIVERSITY OF MINNESOTA-TWIN CITIES	16	14	9	8	9	11	5	11	5	10	6	10	7	4	2	
COLORADO STATE UNIVERSITY - PUEBLO	20	18	10	16	7	19	15	8	7	8	4	2	3	3	1	
COLORADO STATE UNIVERSITY PUEBLO						1			1	1	1	1		2	2	
HAMLIN UNIVERSITY	4	8	3	4	6	4	3	2	2	3	1		1	1		
ST. MARYS UNIVERSITY	13	13	10	10	5	4	13	15	5	7	6	3	3	1	3	1
ST CLOUD STATE UNIVERSITY	7	2	6	3	1	1	5	4	7	1	3	2	1	2		
MINNESOTA STATE UNIVERSITY - MANKATO	2	2	2	5	3	1	7	1	4	2		1	2		1	1
CONCORDIA UNIVERSITY	4	3	1	6	3	6	3	4	7	3	2	2	2	3		
ST. CATHERINE UNIVERSITY	5	6	4	1	2	3	1	1	2	1	1		1	1		
Other	100	79	69	69	59	81	77	73	54	45	41	34	34	16	12	5

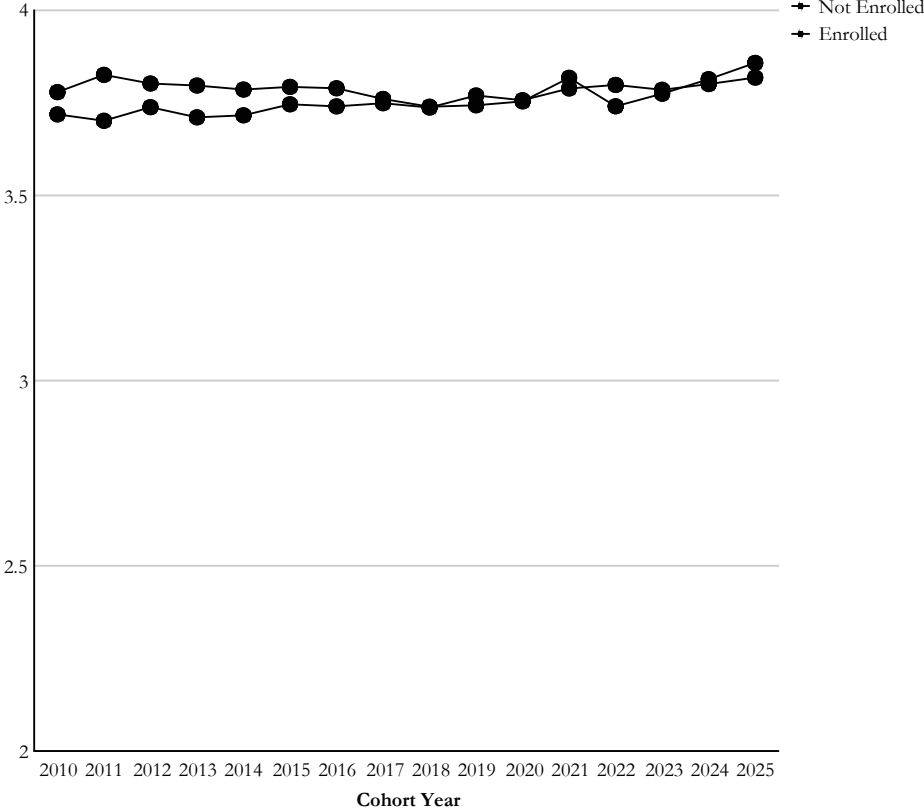
Enrollment Pattern of Students Graduating From UST

Please Make your Selection: --> Graduate

Enrollment within years (as a percent)



Average GPA



Enrollment/Graduation Pattern of Students Graduating From UST

Please Make your Selection: --> Graduate

	Degree Category														
	2010	2011	2012	2013	2014	2015	2016	2017	2018	2019	2020	2021	2022	2023	2024
Bachelor- Level Program	1	3	3	3	2	1		3		1		1			
Certificate	24	25	24	22	22	17	25	30	33	23	25	18	8	14	14
Masters Level Degree	87	73	74	74	36	58	61	65	77	73	72	46	54	44	46
Other	1	3	7	4	5	3	1	2	9	2		1		1	
Ph.D. or similar degree	27	21	16	17	10	21	23	24	18	5	11	5	2	2	
Unknown	14	14	19	19	10	26	11	6	11	8	2	16	13	7	2

Enrollment/Graduation Pattern of Students Graduating From UST

Please Make your Selection: --> Graduate

Graduation Rate

