



## Monthly Update

*September 2025*

## *Lee and Penny Anderson Arena*

*University of St. Thomas, St. Paul, MN*



# Executive Summary

Ryan Companies with the help of our trade partners worked through the following events within the month of September.

- On 10/1, we successfully obtained our Certificate of Occupancy.
- UST is actively furnishing and moving its staff/teams to occupy the arena.
- Horwitz is working through the finalization of all commissioning items as well as working through owner training.
- Total Mechanical continues to advance the controls integration for several units and systems.
- Gephart is finalizing all additional features and continues the progress through the punch list.
- Gresser has completed the stonework at the Ryan Family Plaza.
- Ryan Self Perform is near the completion of all interior final finishes, while also progressing with door hardware installation. Additionally, Ryan Self Perform has finished all exterior concrete site work.
- Metro Manufacturing has finalized the installation of the main arena stadium railings.
- Viking has completed all sprinkler system features.
- Custom Drywall remains focused on addressing punch list items.
- Egan has finished the install of interior storefront systems within the hockey and basketball coaching offices.
- Swanson & Youngdale is advancing through punch list items.
- Acoustic Associates has completed the setting of tile in the Capital Club and suite areas.
- Atomic has completed all vestibule installation work.
- Bolander has completed all exterior site work at the arena and have actively been progressing at the Microgrid project.
- Daktronics has completed all game clock and scoreboard installations.
- H2I has finalized flooring finishes for both of the practice basketball courts.
- Becker has completed dasher board installations in both facilities.
- Advance Terrazzo completed terrazzo flooring installation in the main lobby.
- Irwin has completed seating installation in the Auxiliary Ice Arena and Main Arena and will continue the work of punch items.
- Cedar Ridge has finished the landscaping around the arena.
- 32North has completed the painting at both the Aux Ice and Main Ice.
- Midwest Specialties has mobilized on site and has begun the process of cleaning all windows.



# Key Highlights

## UPCOMING EVENTS/MILESTONES

- ***Men's and Women's Hockey Home Opener – 10/24***
- ***Men's and Women's Basketball Home Opener – 11/8***

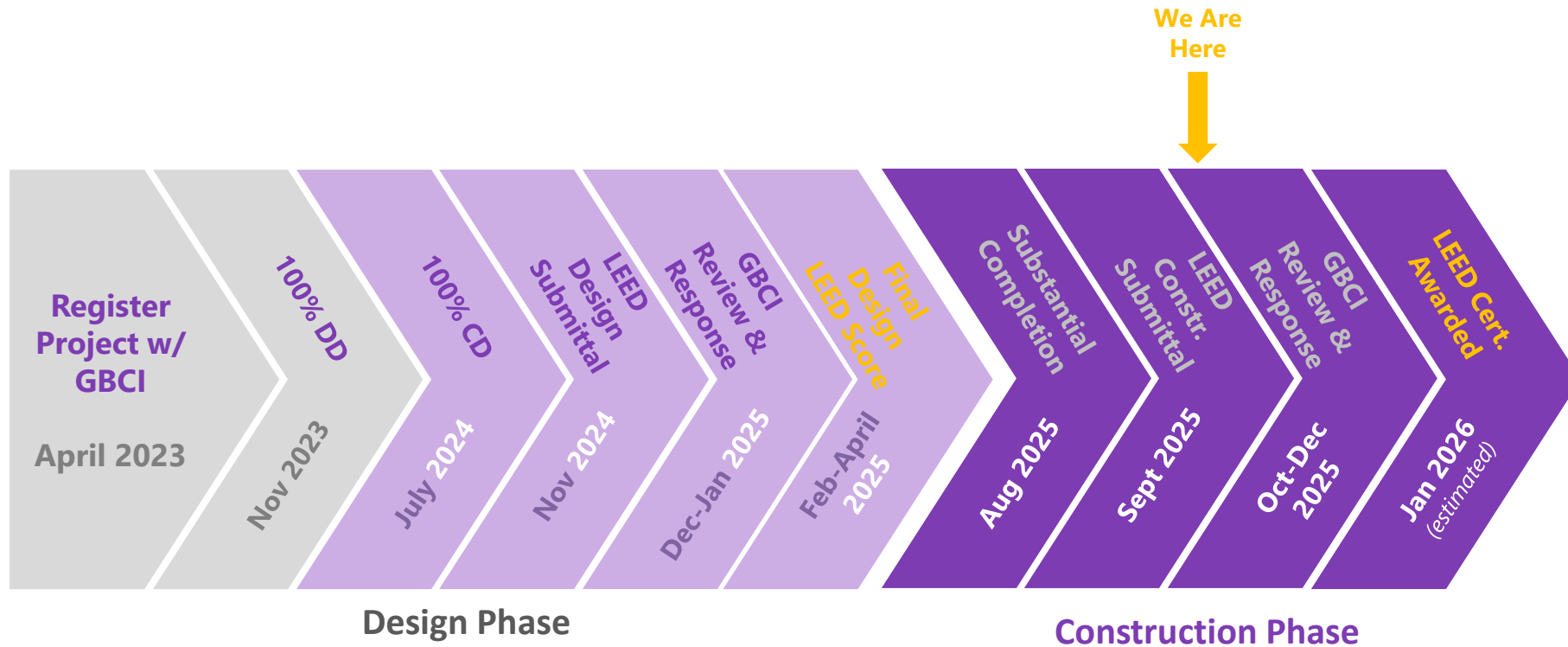


# LEED – Construction Waste Diversion

Month	Waste Hauler	Waste Type	Total Weight (Tons)	Diversion Weight (Tons)	Weight To Landfill (Tons)	Diversion Rate (%)
February	Dem-Con	Mixed	20.96	15.78	5.18	75.3%
March	Dem-Con	Mixed	11.42	8.6	2.82	75.3%
April	Dem-Con	Mixed	9.74	7.33	2.41	75.3%
May	Dem-Con	Mixed	31.24	23.54	7.7	75.4%
June	Dem-Con	Mixed	22.880	17.23	5.65	75.3%
July	Dem-Con	Mixed	103.17	77.69	25.48	75.3%
August	Dem-Con	Mixed	131.05	98.72	32.33	75.3%
August	Dem-Con	Concrete	10,550.73	5,734.48	4,816.25	54.4%
September	Dem-Con	Mixed	75.45	58.22	17.23	77.2%
October	Dem-Con	Mixed	99.92	74.88	25.04	74.90%
November	Dem-Con	Mixed	80.25	59.14	21.11	73.7%
December	Dem-Con	Mixed	95.22	71.62	23.6	75.2%
January	Dem-Con	Mixed	129.76	99.50	30.26	76.7%
February	Dem-Con	Mixed	141.76	106.77	34.99	75.3%
March	Dem-Con	Mixed	187.51	143.40	44.11	76.5%
April	Dem-Con	Mixed	183.43	140.43	43.00	76.6%
May	Dem-Con	Mixed	183.78	141.27	42.51	76.9%
June	Dem-Con	Mixed	164.42	117.15	47.27	71.3%
July	Dem-Con	Mixed	160.60	122.59	38.01	76.3%
August	Dem-Con	Mixed	146.35	110.79	35.56	75.7%
		Grand Total	12,529.64	7,229.13	5,300.51	57.7%



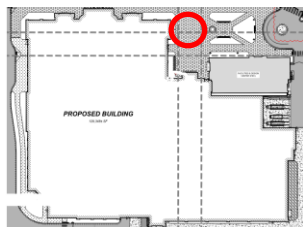
# Sustainability – Timeline



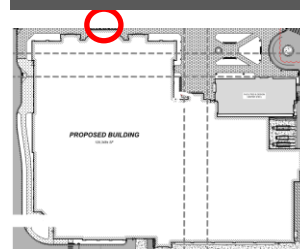




Premium Entrance Exterior Completion



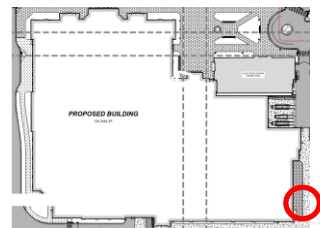
Main Arena North Exterior Completion



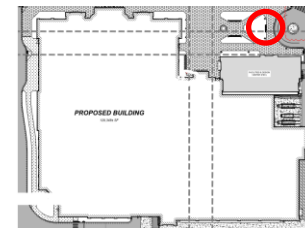




Aux Ice East Exterior Completion



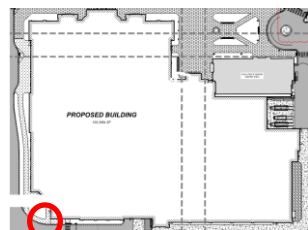
Northeast Exterior Landscaping Completion



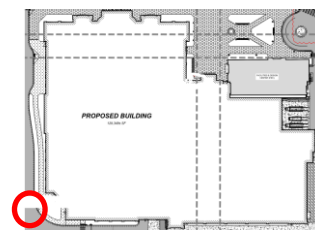




Main Arena South Elevation Completion



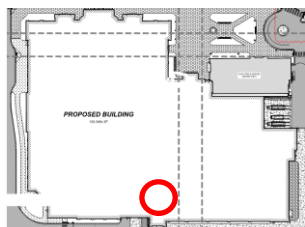
Main Arena West Elevation Completion



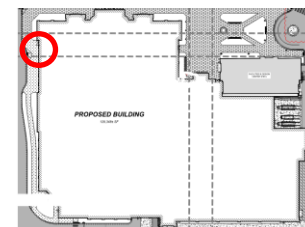




Main Arena South Roof Lightning Protection Installation



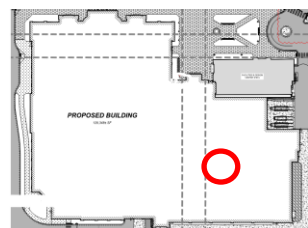
Main Arena West Roof Lightning Protection Installation



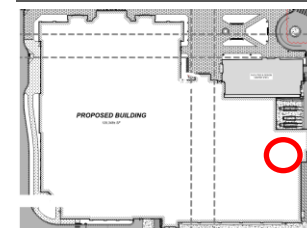




Auxiliary Ice Finishes



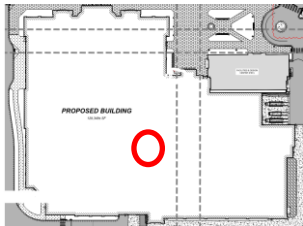
Auxiliary Ice Finishes



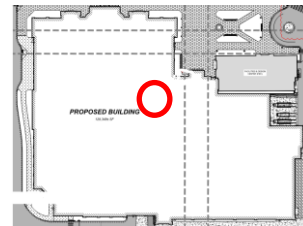




Main Arena Event Level Hockey Locker Room



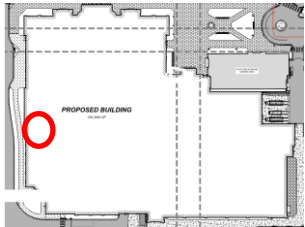
Main Arena Event Level Hockey Player Lounge



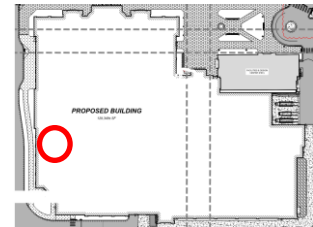




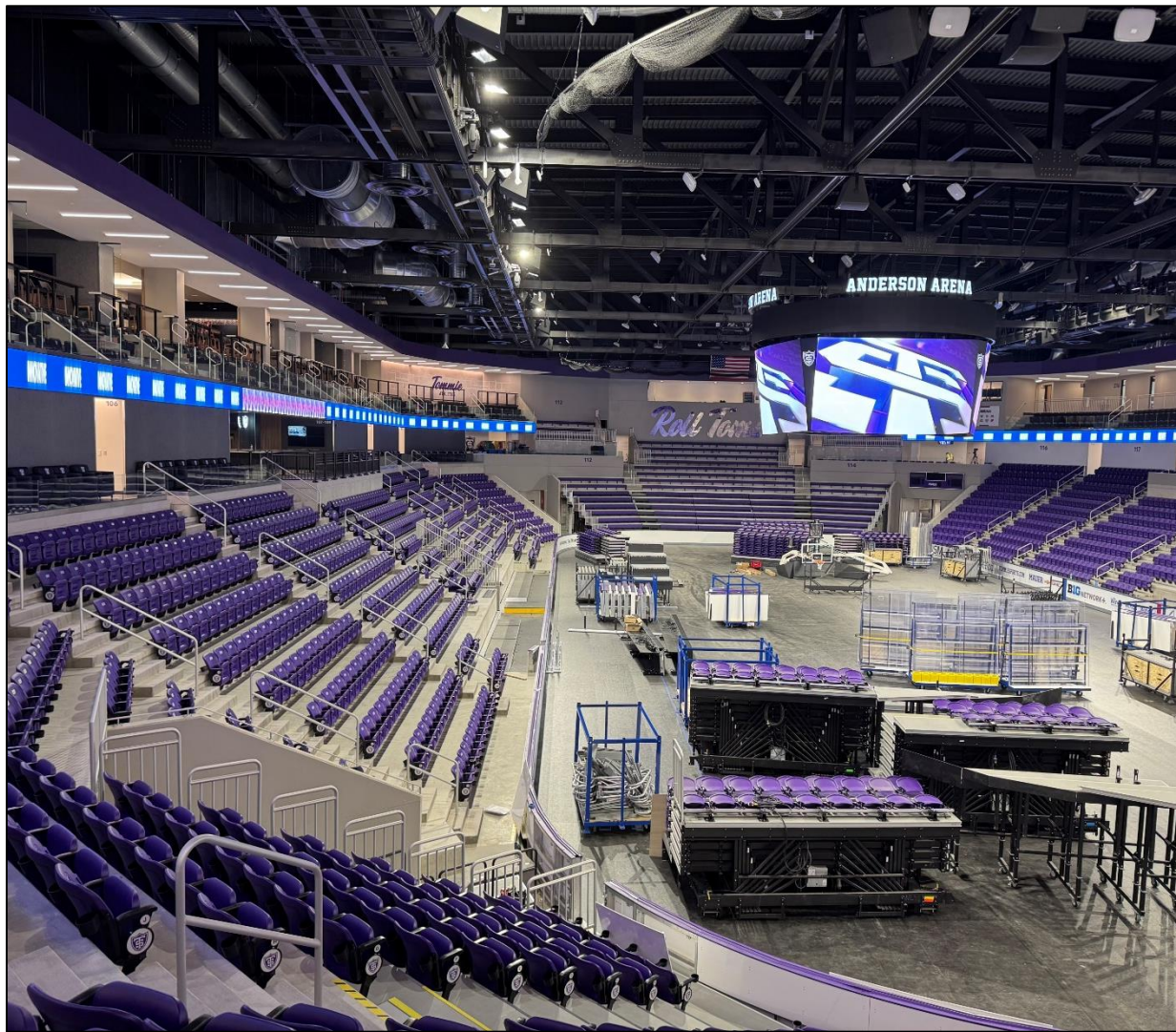
Event Level Hydrotherapy Pool



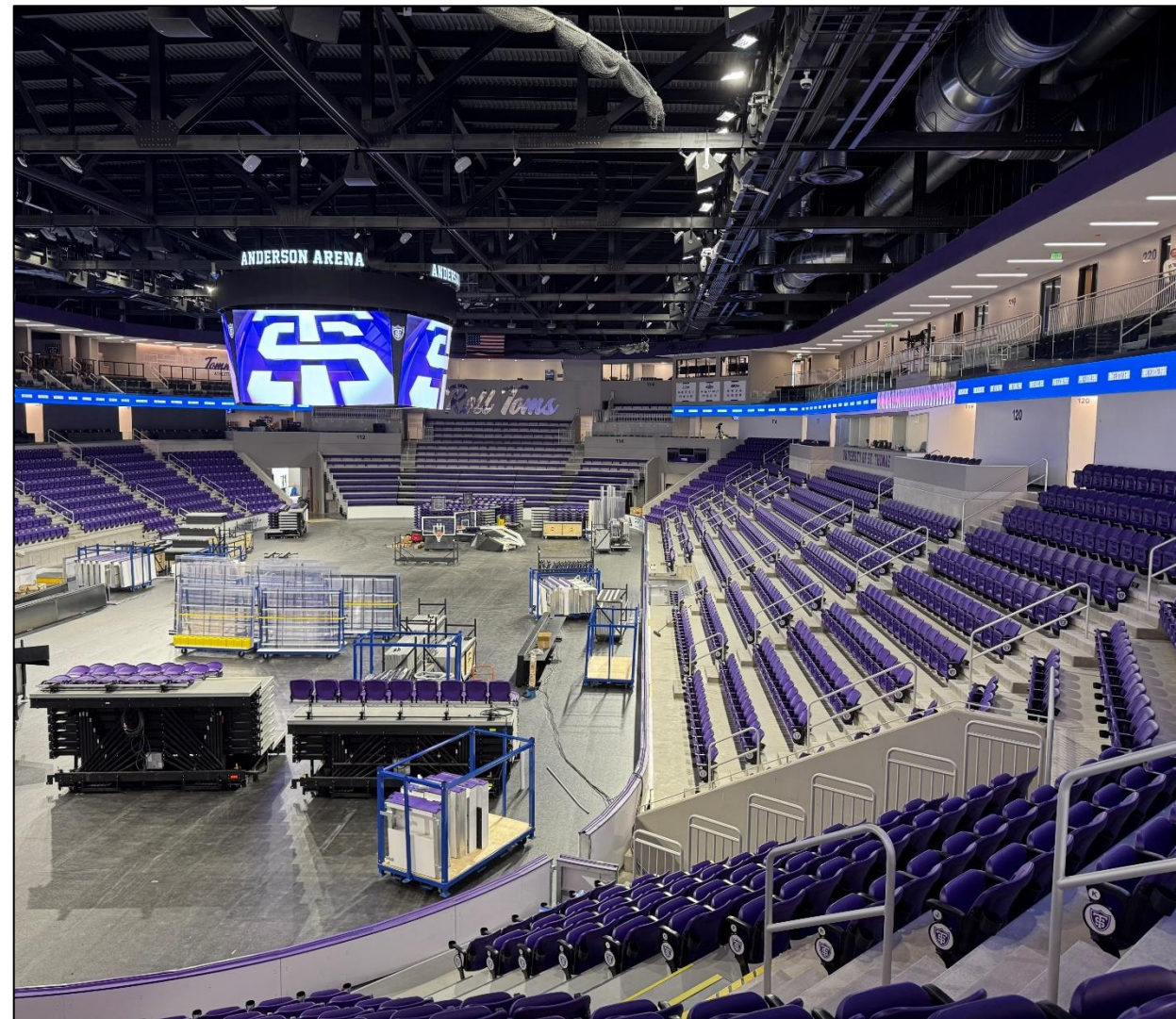
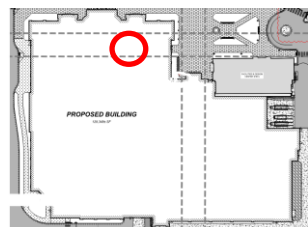
Event Level Strength Training



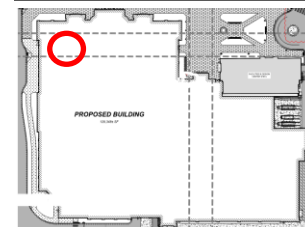




Main Arena Bowl East Finishes



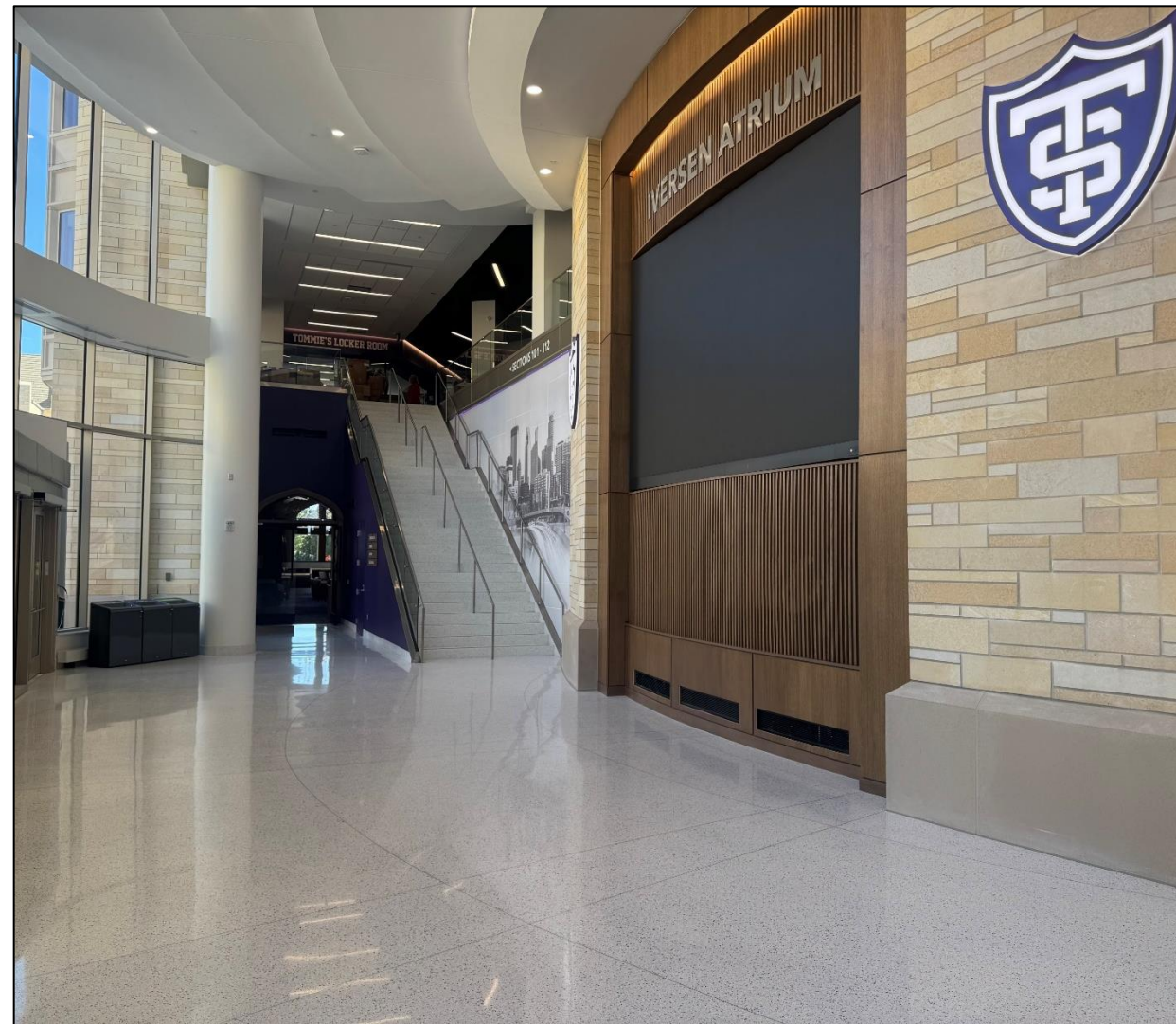
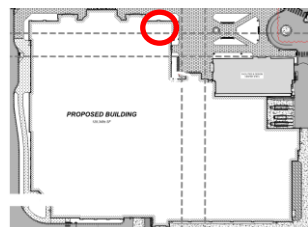
Main Arena Bowl West Finishes



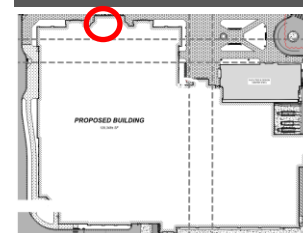




Event Level Reuben's Lounge



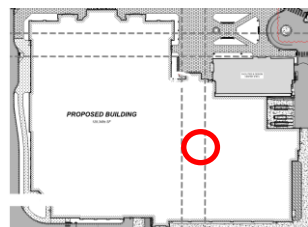
Event Level Main Entrance



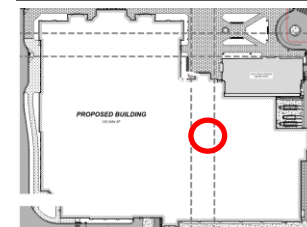




Event Level Women's Basketball Players Lounge



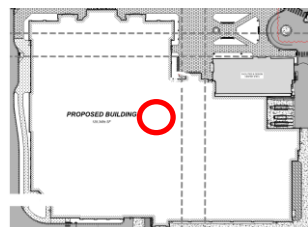
Club Level Men's Basketball Film Room



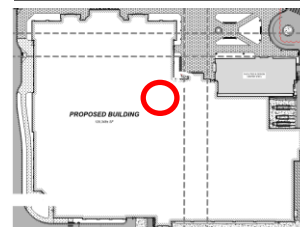




Club Level Legacy Club



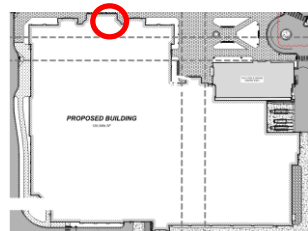
Club Level Institutional Suite



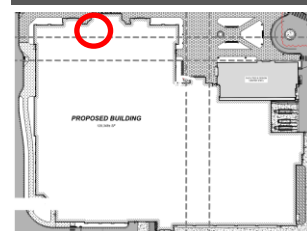




Club Level Capital Club



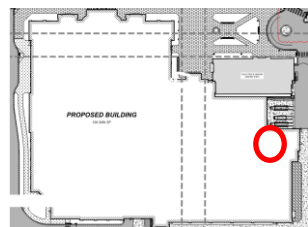
Club Level Capital Club



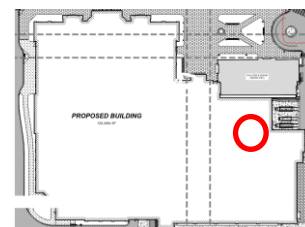




Interior Finishes at Soccer Locker Room



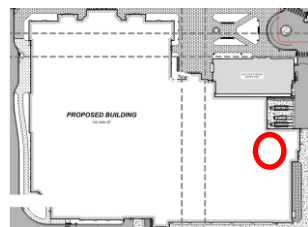
Interior Finishes at Soccer Player Lounge



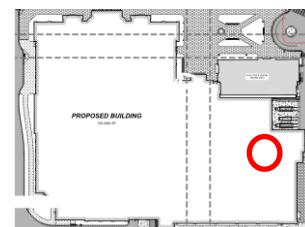




Event Level Softball Locker Room



Event Level Softball Player Lounge







ALL FOR THE COMMON GOOD