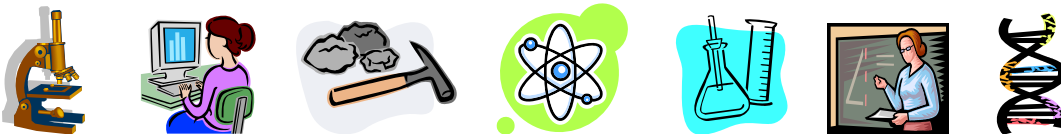


SMEE - A University of St. Thomas Major Science and Mathematics for Elementary Education

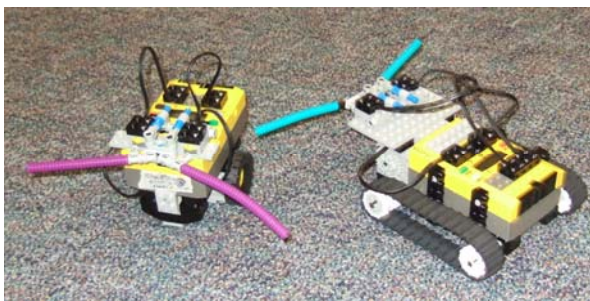


This interdisciplinary science and mathematics major combines a thorough grounding in the natural sciences, mathematics and computer science with the preparation for a career in elementary school or middle school education. The major is designed to provide new teachers with the knowledge, confidence, and enthusiasm needed in our programs in science and mathematics. It is only available as a co-major for those students also majoring in elementary education.

All SMEE graduates satisfy both the elementary school teacher licensure requirements and the Science middle school licensure requirements. Some of our SMEE students choose to do additional work (4 credits) to also satisfy the Math middle school licensure requirements.

"I have thoroughly enjoyed the diversity of the SMEE program. The SMEE seminar classes explore creativity in math and science that are not a part of the regular classroom. I have experienced much positive feedback about the benefits of being an elementary teacher with a passion for math and science, especially as these subjects are becoming more important in earlier grades. I feel well prepared to tackle the challenges as well as the curriculum faced in the classroom." – 2006 SMEE senior Renee Coller

"The SMEE program helps me to be a well-rounded and more marketable teacher."
- 2006 SMEE senior Josh Bettes

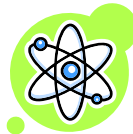
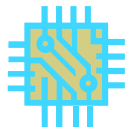


Pictures of robots built by students in the SMEE Capstone Course – SMEE 359

Students seeking additional information about this program should contact one of the following:

- Professor Lisa Rezac, SMEE Director, Department of Mathematics, 651-962-5557, lmrezac@stthomas.edu
 - Professor Lucy Payne, Department of Education, 651-962-4448, llpayne@stthomas.edu
-

Science and Mathematics for Elementary Education



Suggested Program for Entering Freshman

	FALL	SPRING
Year 1	MATH 100 ² PHYS 101* General requirements/Electives	QMCS 120 CHEM 100* General requirements/Electives
Year 2	MATH 121 GEOL 111* EDUC Block I (8 credits) SMEE 181 ¹	BIOL 101* SPECIAL A ² General requirements/Electives SMEE 182 ¹
Year 3	EDUC Block II (8 credits) SPECIAL B ² General Requirements/Electives	SMEE 359 ³ General Requirements/Electives
Year 4	EDUC Block III (16 credits)	EDUC Block IV (12 credits – includes student teaching)

* Or an approved alternative in that discipline.

- 1 SMEE 181 and 182: NONCREDIT SCIENCE SEMINAR consisting of five, one-hour meetings per semester, and is offered for SMEE students enrolled in the laboratory science courses. Two semesters of the seminar are required.
- 2 SPECIAL A and SPECIAL B are the courses needed to complete a specialization in one of these departments: BIOL, CHEM, GEOL, MATH, PHYS, OR QMCS. Please see the SMEE Program Director for specific recommendations. Math Specialists may not need Math 100.
- 3 SMEE 359 may not be taken concurrently with either EDUC Block III or EDUC Block IV.